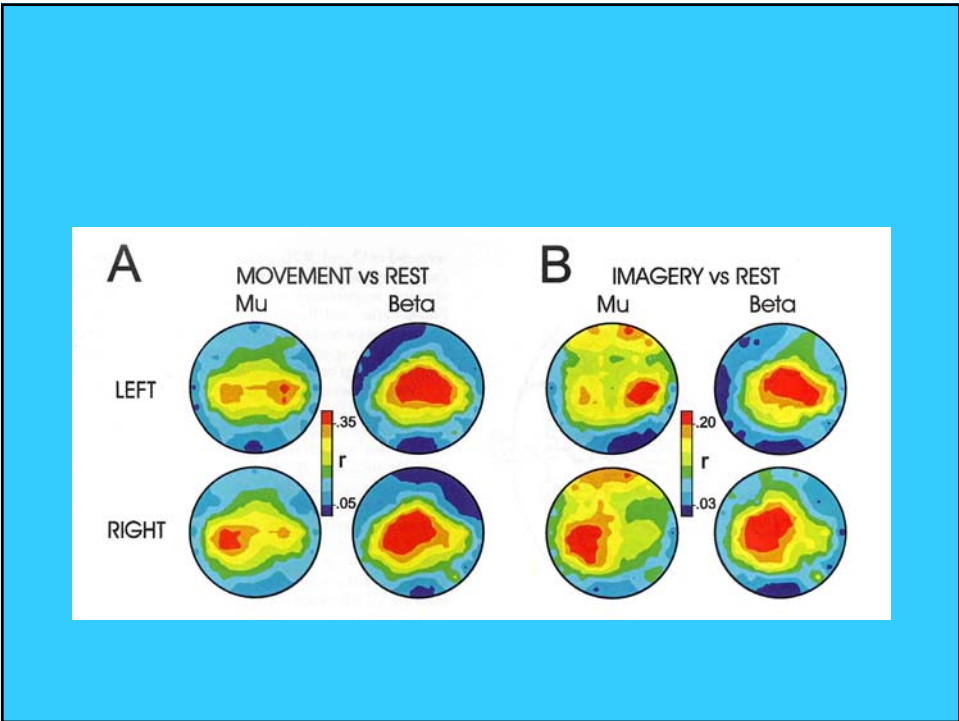
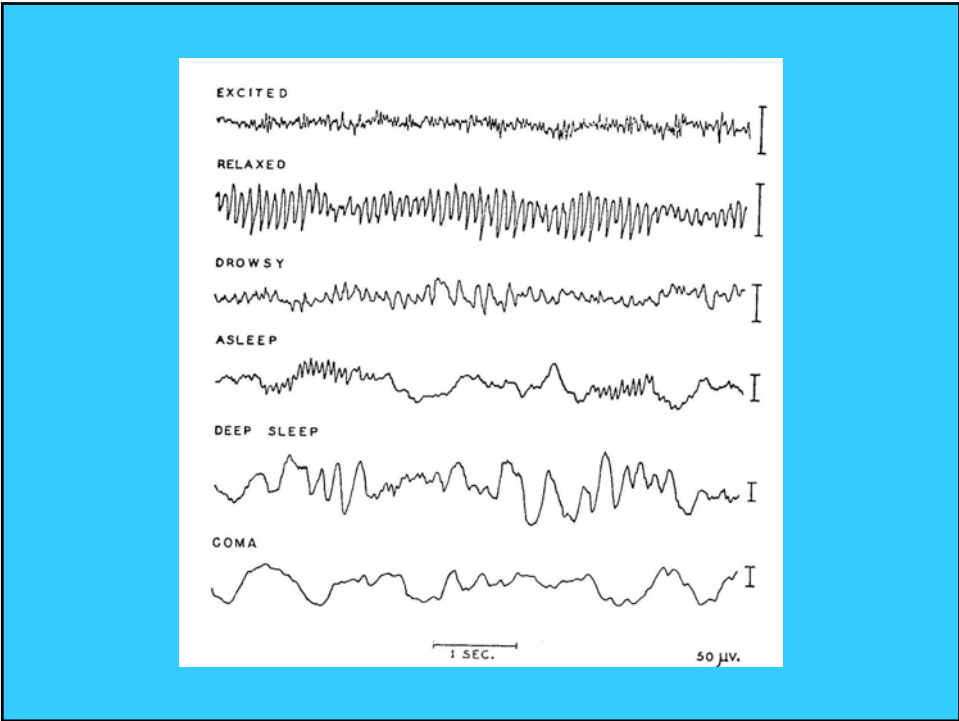
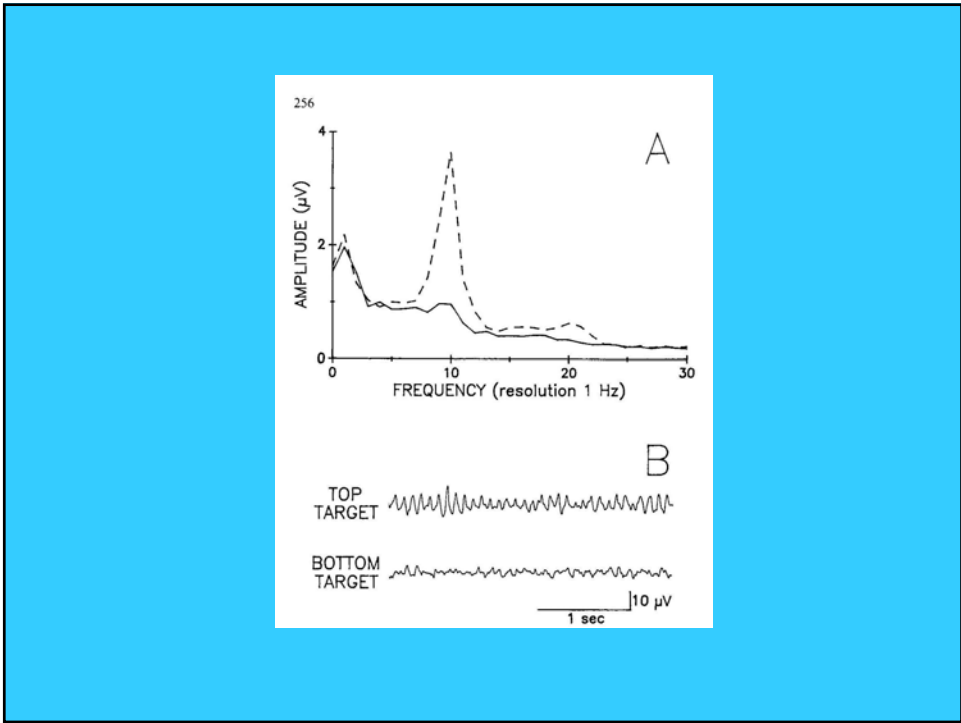
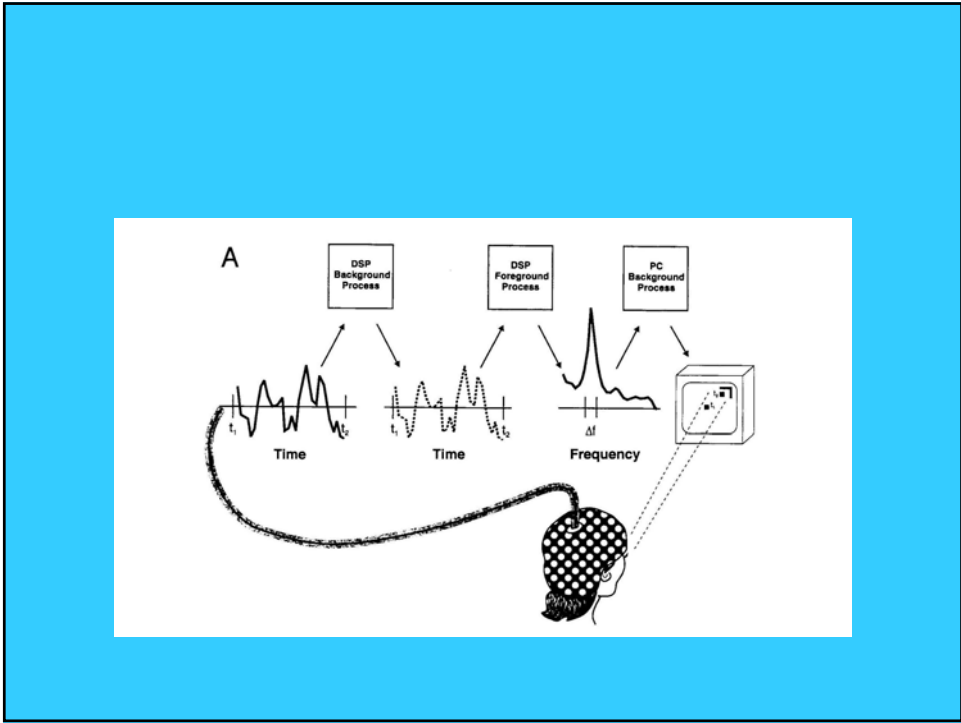


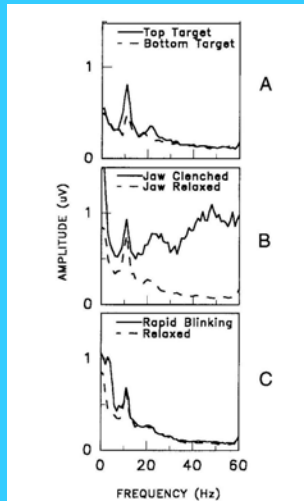
A NONINVASIVE BRAIN-COMPUTER INTERFACE EMULATING FULL MOUSE CONTROL

DJ McFarland, WA Sarnacki, and JR Wolpaw
Laboratory of Nervous System Disorders, Wadsworth Center,
New York State Dept. Health, Albany, NY, USA



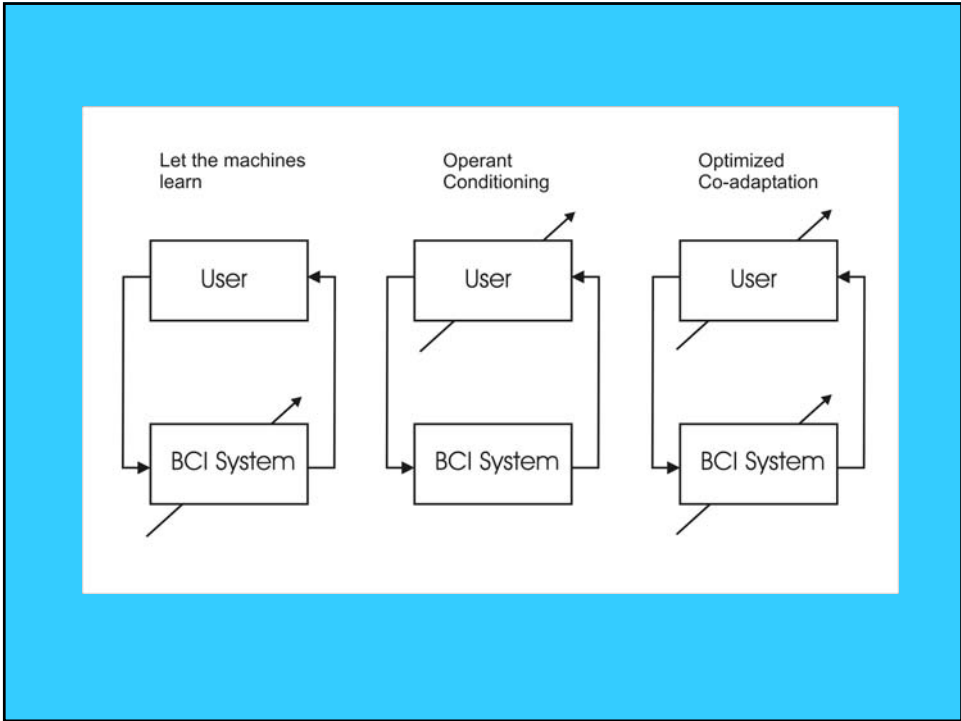


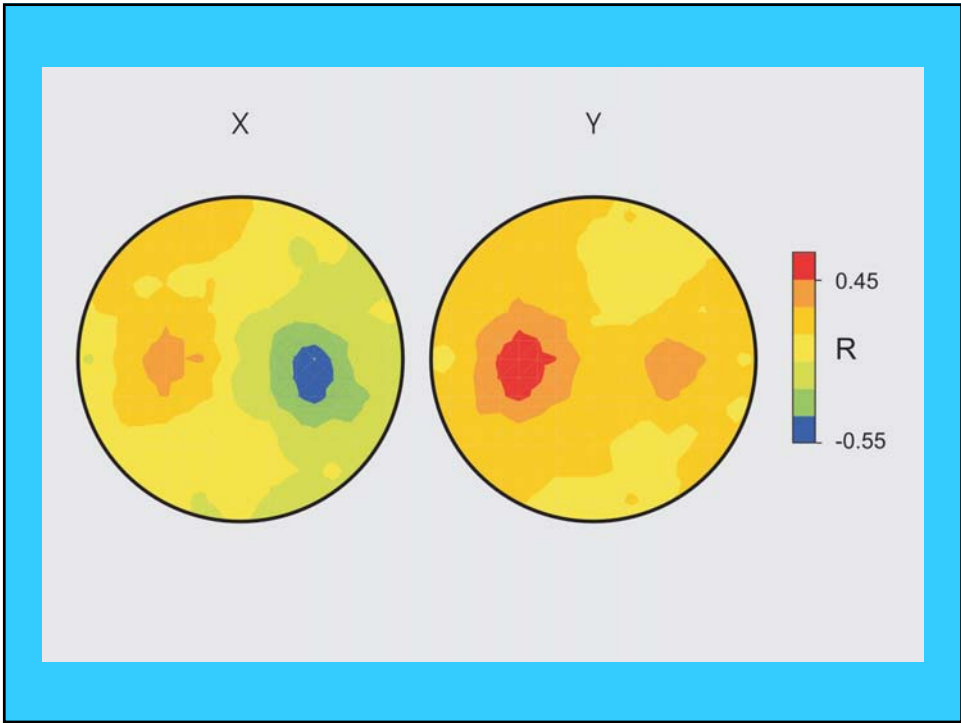
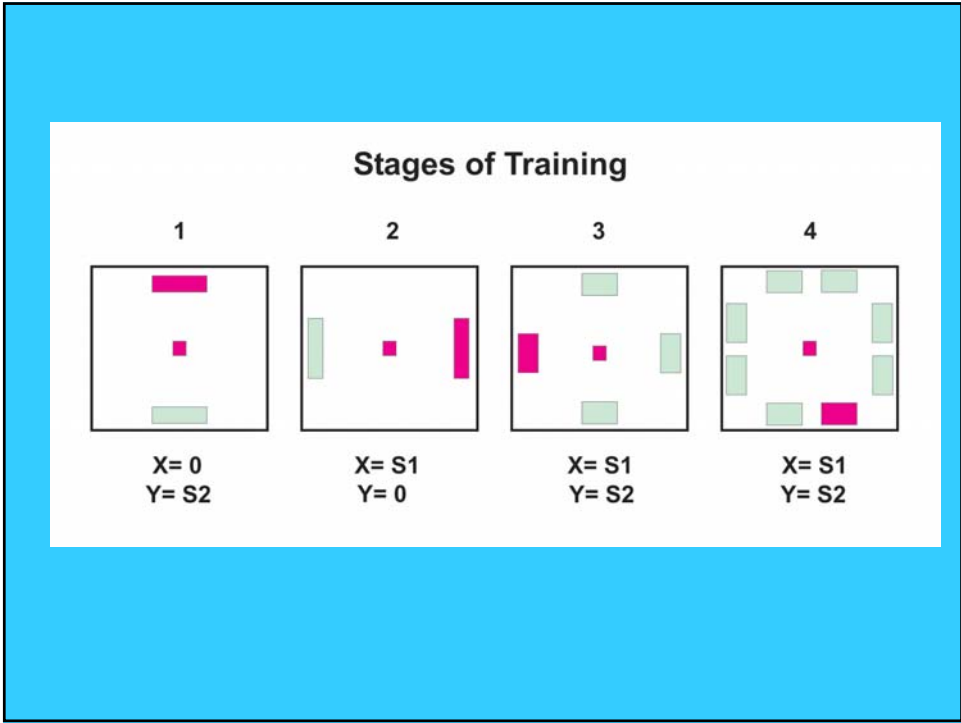




Three BCI Philosophies

- Let the machines learn
- Operant Conditioning
- Optimized Co-adaptation





BCI to date

- Actual control of EEG
 - Need to evaluate artifacts
 - Need to document performance
- Useful for those with major disabilities
- Users expand with better speed/accuracy

Acknowledgments

- Steven David
- Dean Krusienski
- Tod Lefkowicz
- Lynn McCane
- Laurie Miner
- Greg Neat
- Bill Sarnacki
- Gerwin Schalk
- Eric Sellers
- Theresa Vaughan
- Jon Wolpaw